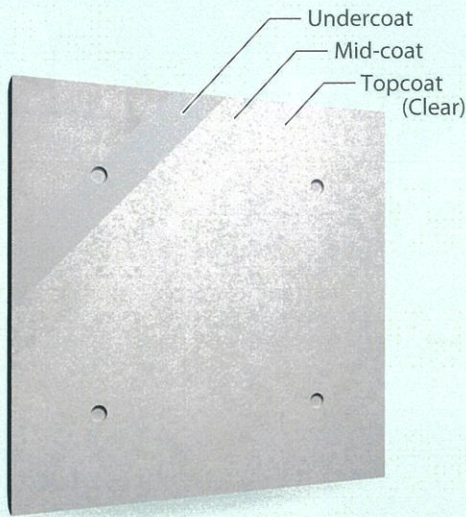


# CERAMI RC-FR system

CERAMI RC-FR system is a new concrete-look coating system that revives the feel and texture of fair-faced concrete with a unique coating. Acrylic silicone resin is adopted for mid-coat and clear topcoat. Fluorine resin based clear topcoat can be also chosen, so it provides excellent weather resistance and prevents carbonation. The full water-based system from undercoat to topcoat can be applied with a roller. It is excellent in on-site workability and safety.

## System composition



## Features



Super durability, super weather resistance



Acid resistance



Dirt resistance



Anti-carbonation



Environmentally friendly & safe



Short work period



Colour variation



Easy workability



Alkali resistance

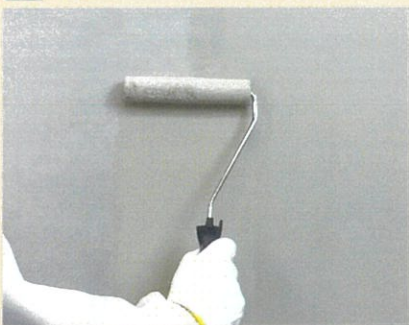
|                 |              |
|-----------------|--------------|
| Type            | Water-based  |
| Resin (Topcoat) | Si F         |
| Gloss           | G 30         |
| Finishes        | Clear finish |

## Suitable substrates

Fair-faced concrete (new building, renovation), Cement mortar, GRC panels, PC panels, and moulding boards, etc.

## Application procedure

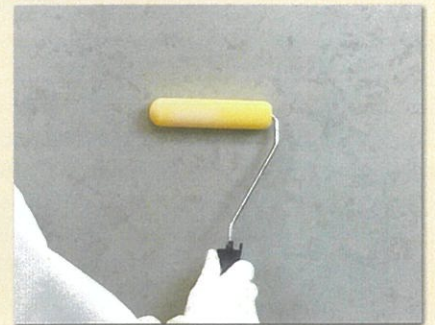
**1** Apply undercoat



**2** Apply main coat using a special roller



**3** Apply topcoat



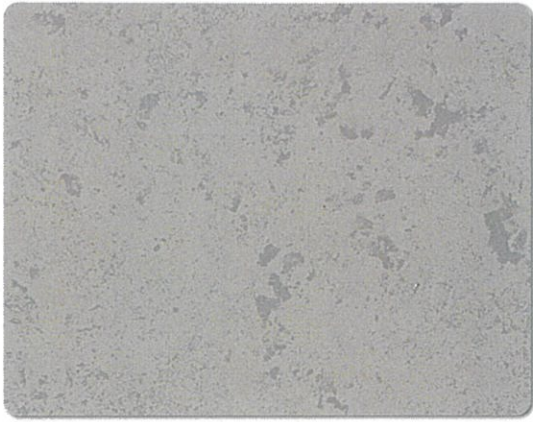
### How to create patterns on a special roller

In order to revive a natural texture of fair-faced concrete, use a special roller with patterns to apply mid-coat. How to create patterns on a special roller is to nip off the sponge of a roller by hand in a mottled pattern.



## Standard colours

---



BFR-01/FFR-01



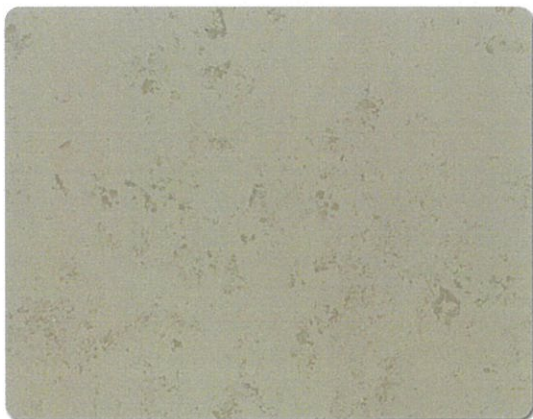
BFR-02/FFR-02



BFR-06/FFR-06



BFR-07/FFR-07



BFR-08/FFR-08



BFR-09/FFR-09

## Tie hole

---



PFR-01



PFR-02



PFR-03