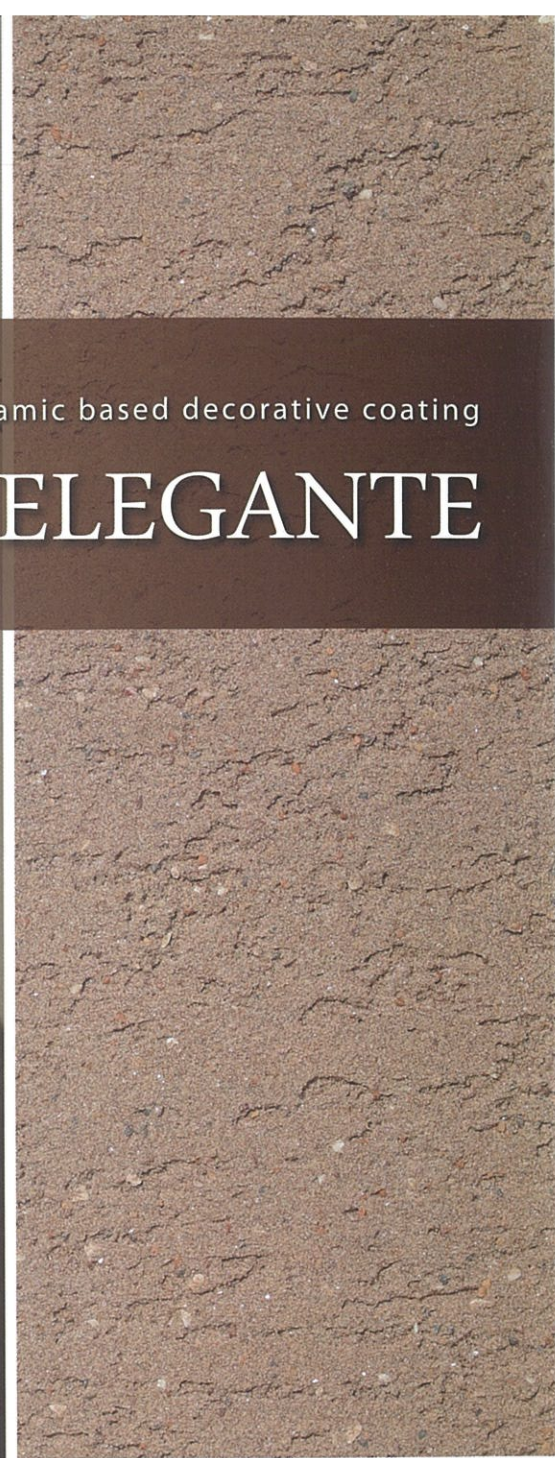


Soil wall-like ceramic based decorative coating

SAND ELEGANTE



SKK

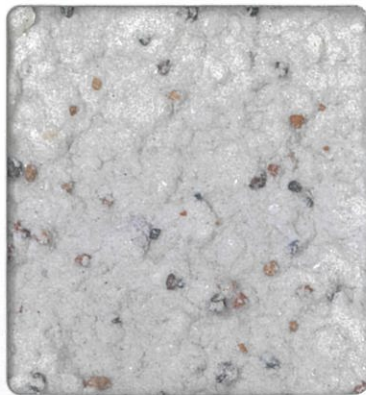
SAND ELEGANTE

● Rough

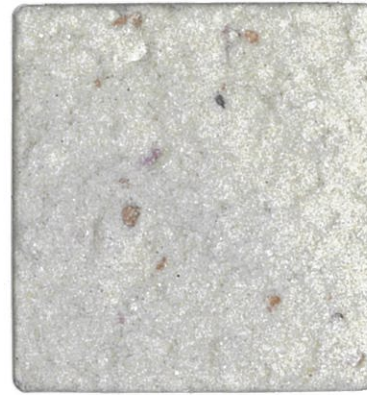


NEW

EG-201



EG-146



NEW

EG-202



EG-001



EG-002



EG-003



NEW

EG-203



NEW

EG-204



EG-004



NEW

EG-205



NEW

EG-206



EG-147

- The actual colours may look different as the materials are applied to paper in the catalogue. Use a sample board as reference (if you have).
- Due to the use of natural materials, there may be a slight difference in colours.

SAND ELEGANTE



NEW

EG-207



NEW

EG-208



EG-031



EG-041



NEW

EG-209



EG-042



EG-016



NEW

EG-210



EG-037



EG-043



EG-144



EG-105

- Some colours may not be in stock. For details such as delivery date, please contact the nearest sales office.
- Pattern and colour may vary significantly depending on the way of applying. Check the finish by test application prior to the actual application.

SAND ELEGANTE



EG-014



EG-211

NEW



EG-212

NEW



EG-017



EG-213

NEW



EG-139



EG-135



EG-214

NEW



EG-215

NEW



EG-130



EG-216

NEW



EG-217

NEW

Standard Patterns

Rough



Rough pressed



Hairline



Sand bar-L



Trowel random



Travertine



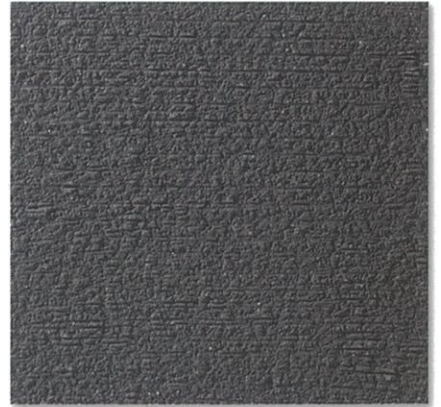
Pressed



Tail



Canyon



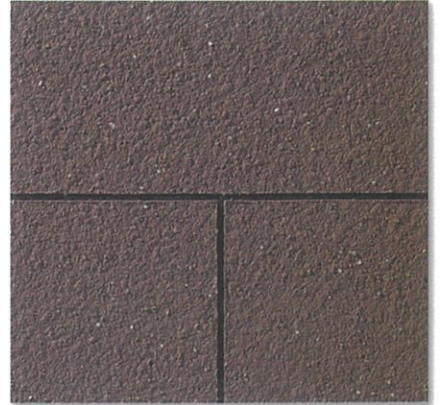
Scratch



Flower travertine



Groove (black)*



* Groove of the same colour as the coating is also available.

• Printed colours may be different from actual material colours. Check with sample boards before placing an order.

Standard Patterns

Hairline (double colour)



Travertine (double colour)



Pressed (double colour)



Flower travertine (double colour)



Tail (double colour)



Tile

* Using pattern paper



• Printed colours may be different from actual material colours. Check with sample boards before placing an order.

FEATURES



High weather
resistance



Anti-fungus,
Anti-algae



Environmentally
friendly

USES

Exterior and interior for houses, condominiums,
hotels, shops and public facilities, etc.

SUITABLE SUBSTRATES

Concrete, Cement rendering, PC members, ALC panels,
Slate boards, Siding boards, etc.



HEAD OFFICE IN JAPAN
SK KAKEN CO., LTD.
5-25, 3-Chome, Nakahozumi, Ibaraki-City,
Osaka, 567-0034, Japan
Tel: (81) 72-621-7727 Fax: (81) 72-621-7728
Web: <http://www.sk-kaken.co.jp>



SINGAPORE SKK (S) PTE. LTD.
14 Pandan Road, Singapore 609262
Tel: (65) 6274-0020 Fax: (65) 6278-0060
Web: <http://www.sk.com.sg>
Factory: SINGAPORE FACTORY

INDONESIA
PT. SKK KAKEN DISTRIBUSI
PT. SKK KAKEN KONSTRUKSI
Setiabudi Atrium Building, 5th floor, suite 506,
Jl. H. R. Rasuna Said Kav. 62, Jakarta, Indonesia 12920
Tel: (62)21-5210401(5210402) Fax: (62)21-5210403
Factory: PT. SKK KAKEN INDONESIA

MALAYSIA SK KAKEN (M) SDN. BHD.
Suite 13, 01, Level 13, Centrepoint South, The
Boulevard, Mid Valley City, Lingkaran Syed Putra,
59200 Kuala Lumpur, Malaysia
Tel: (60)3-2282-9800 Fax: (60)3-2282-9810
Web: <http://www.sk.com.my>
Branch Office: Johor Bahru, Kuantan, Penang
Factory: SKK CHEMICAL (M) SDN. BHD.

THAILAND
SK KAKEN (THAILAND) CO., LTD.
518/5 Maneeaya Center Building 6th Floor,
Pleonchit Rd., Lumpini, Pathumwan, Bangkok 10330
Tel: (66)2-652-0600(0585)(0858)
Fax: (66)2-652-0639
Web: <http://www.sk.com.th>

Branch Office: Chiang Mai
Factory: SKK CHEMICAL (THAILAND) CO., LTD.

HONG KONG SKK (H.K.) CO., LTD.
38/F, Lee & Man Commercial Center,
169 Electric Road, Fortress Hill, Hong Kong
Tel: (85) 2-2529-3968 Fax: (85) 2-2527-0299
Web: <http://www.sk.hk.com.hk>

CHINA
SIKOKU KAKEN (SHANGHAI) CO., LTD.
Units 3-7, 25F, Far East International Plaza A, No. 319
Xianxia Road, Changning District, Shanghai, China
Tel: (86) 21-6209-9169 Fax: (86) 21-6209-9189
Web: <http://www.sk.com.cn>

Branch Office: Beijing, Guanzhou, Shenyang,
Wuhan, Chongqing, Kunming, Nanjing, Suzhou, Hangzhou,
Tianjin, Changchun, Xi'an, Hefei, Henan
Factory:
SHANGHAI FACTORY