



# GRANITAILOR IN TRAVERTINE

Natural travertine stone-like lightweight prefabricated sheet

*for Interior*

**SKK**



Natural travertine stone-like lightweight prefabricated sheet

# GRANITAILOR IN TRAVERTINE

*for Interior*

GRANITAILOR IN TRAVERTINE is a natural travertine (limestone) stone-like prefabricated sheet material. The streaks and pores of natural stone are faithfully reproduced and it makes the room luxurious. It is thin and lightweight compared to natural stone. The material has flexibility, so it can be applied to a variety of surfaces including round design. Furthermore, since high strength silicone clear topcoat is applied to the material surface, it is excellent in dirt resistance and scratch prevention function.



AEON MALL Okinawa Rycom  
Japan



## Features



Thin and lightweight



Suitable for renovation



Fire resistance



Scratch prevention,  
dirt resistance



Flexible to circular surface



Good resistance against  
water penetration

## Standard Colours

\* Groove colours are the same as each colour.

\* Since it contains natural materials, it may cause colour unevenness.

\* Printed colours may be different from actual colours. Check with sample boards and/or catalogues before placing an order.



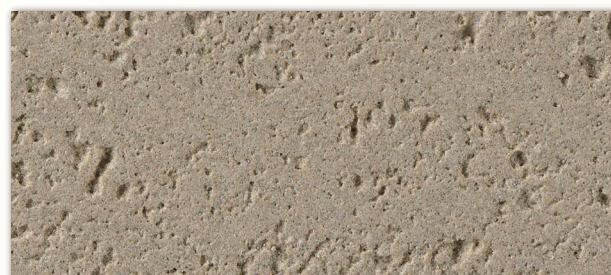
TRS-001



TRS-006



TRS-002



TRS-007



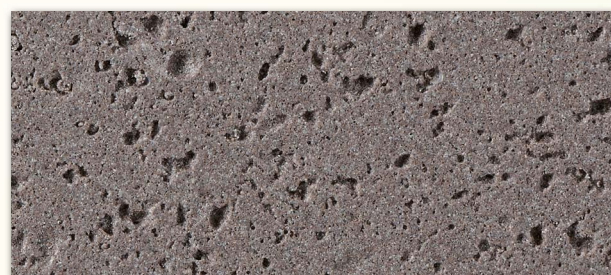
TRS-003



TRS-008



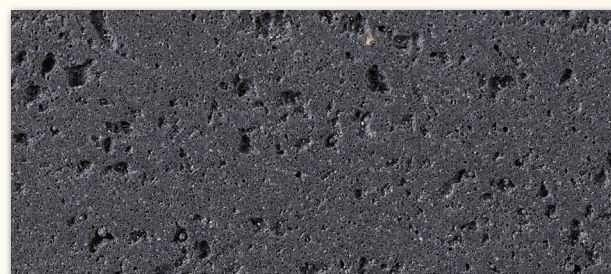
TRS-004



TRS-009



TRS-005



TRS-010

## Packing style

Size / Thickness	Packing style *	Coverage *	Weight
595 × 595 × 2.0 mm	6 sheets	2.12 m <sup>2</sup> /box	2.1 kg/m <sup>2</sup>
445 × 595 × 2.0 mm	8 sheets	2.12 m <sup>2</sup> /box	2.1 kg/m <sup>2</sup>
295 × 595 × 2.0 mm	12 sheets	2.11 m <sup>2</sup> /box	2.1 kg/m <sup>2</sup>

\* The numbers are not included the width of groove (5 mm wide).

## Suitable substrates

Concrete, cement rendering, plaster boards, slate boards, calcium silicate boards, etc.

## Uses

Interior wall of commercial facilities  
Interior wall of entrance hall for hotels, condominiums, buildings, etc.

\* Avoid applying on floors or bathrooms that are directly exposed to water.



**HEAD OFFICE IN JAPAN**  
**SK KAKEN CO., LTD.**  
5-25, 3-Chome, Nakahozumi, Ibaraki-City,  
Osaka, 567-0034, Japan  
Tel: (81) 72-621-7727 Fax: (81) 72-621-7728  
Web: <http://www.sk-kaken.co.jp>



**SINGAPORE SKK (S) PTE. LTD.**  
14 Pandan Road, Singapore 609262  
Tel: (65) 6274-0020 Fax: (65) 6278-0060  
Web: <http://www.skk.com.sg>  
**Factory: SINGAPORE FACTORY**

### INDONESIA

**PT. SKK KAKEN DISTRIBUSI**  
**PT. SKK KAKEN KONSTRUKSI**  
Setiabudi Atrium Building, 5th floor, suite 506,  
Jl. H. R. Rasuna Said Kav. 62, Jakarta, Indonesia 12920  
Tel: (62)21-5210401(5210402) Fax: (62)21-5210403  
**Factory: PT. SKK KAKEN INDONESIA**

### MALAYSIA SK KAKEN (M) SDN. BHD.

Suite 13. 01, Level 13, Centrepoint South, The  
Boulevard, Mid Valley City, Lingkaran Syed Putra,  
59200 Kuala Lumpur, Malaysia  
Tel: (60)3-2282-9800 Fax: (60)3-2282-9810  
Web: <http://www.skk.com.my>  
**Branch Office: Johor Bahru, Kuantan, Penang**  
**Factory: SKK CHEMICAL (M) SDN. BHD.**

### THAILAND

**SK KAKEN (THAILAND) CO., LTD.**  
518/5 Manee Center Building 6th Floor,  
Pleochit Rd., Lumpini, Pathumwan, Bangkok 10330  
Tel: (66)2-652-0600(0585)(0858)  
Fax: (66)2-652-0639  
Web: <http://www.skk.co.th>

**Branch Office: Chiang Mai**

**Factory: SKK CHEMICAL (THAILAND) CO., LTD.**

### HONG KONG SKK (H.K.) CO., LTD.

38/F, Lee & Man Commercial Center,  
169 Electric Road, Fortress Hill, Hong Kong  
Tel: (85) 2-2529-3968 Fax: (85) 2-2527-0299  
Web: <http://www.skkhk.com.hk>

### CHINA

**SIKOKU KAKEN (SHANGHAI) CO., LTD.**  
Units 3-7, 25F, Far East International Plaza A, No. 319  
Xianxia Road, Changning District, Shanghai, China  
Tel: (86) 21-6209-9169 Fax: (86) 21-6209-9189  
Web: <http://www.skk.com.cn>

**Branch Office: Beijing, Guanzhou, Shenyang,  
Wuhan, Chongqing, Kunming, Nanjing, Suzhou, Hangzhou,  
Tianjin, Changchun, Xi'an, Hefei, Henan**

**Factory: SHANGHAI FACTORY**