



BELL ART SERIES

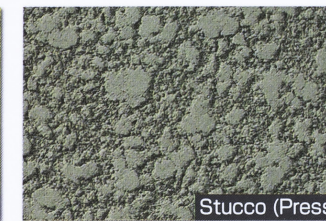
Multi-design and decorative finish coating

SKK

SPRAY FINISH



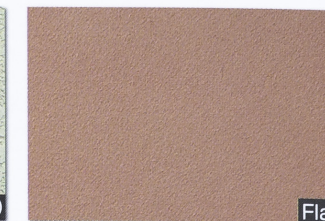
● SIPOSAND
● Stucco Gun



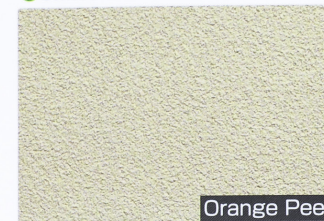
● SIPOSAND
● Stucco Gun



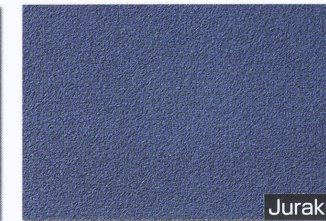
● ---
● Tile Gun



● ---
● Lithin Gun



● ---
● Lithin Gun



● Marble powder No.1
● Lithin Gun



● SIPOSAND
● Lithin Gun



● Marble powder No.1,3,5,8
● Lithin Gun, Wooden Trowel

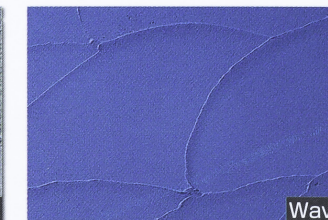
TROWEL FINISH



● SIPOSAND
● Wooden Trowel



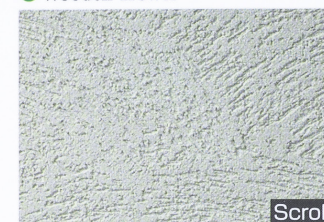
● Marble powder No.1,5
● Square Trowel



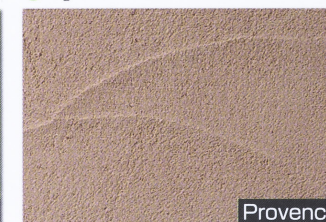
● ---
● Sharp Trowel



● ---
● Sharp Trowel



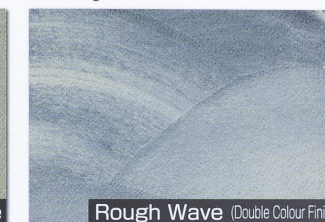
● Marble powder No.1,5
● SK Finishing Trowel



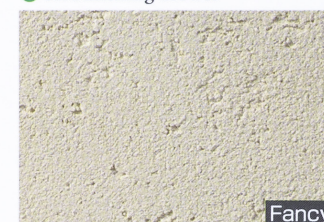
● SIPOSAND
● Sharp Trowel



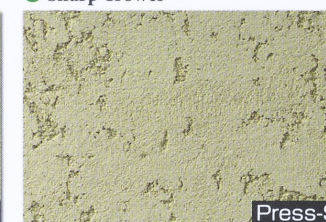
● Marble powder No.1
● Sharp Trowel



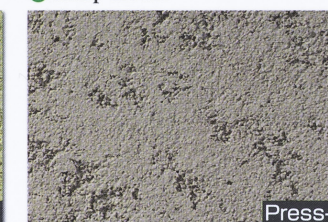
● Marble powder No.1
● Sharp Trowel



● Marble powder No.1,5
● Sharp Trowel



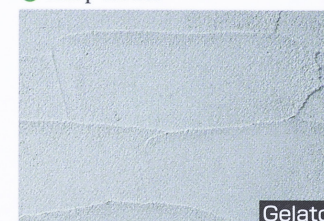
● SIPOSAND
● Sharp Trowel



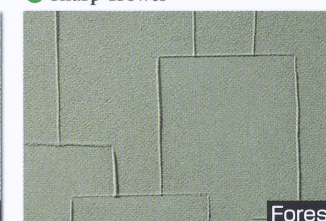
● Marble powder No.5,8
● Wooden Trowel



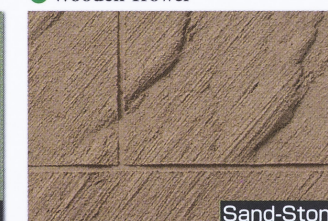
● Marble powder No.5,8
● Wooden Trowel



● Marble powder No.1
● Sharp Trowel



● ---
● Square Trowel



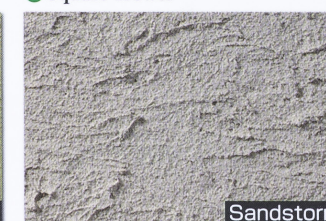
● Marble powder No.3
● Sharp Trowel, SK Design Brush



● Marble powder No.3
● Sharp Trowel, SK Design Brush



● ---
● Sharp Trowel



● N-STONE
● Wooden Trowel



● N-STONE
● Square Trowel



● N-STONE
● Wooden Trowel

● indicates Aggregates used
● indicates Application tools used for patterning

A



B





* The actual colours may look different as the materials are applied to paper in this catalogue.
 * All samples are Flat finish. Even with the same colour, it may look different depending on the pattern. Check the pattern as well as the colour with a sample board for each project.
 * For some colours, it may not have regular stock. For details on the delivery, please contact the nearest sales office.
 * Samples marked ※ are more costly due to material costs.

Product line-up

BELL ART series products are all approved as formaldehyde emission class **F★★★★**.

BELL ART F



Super durable, dirt resistant, fluorine resin based multi-design and decorative finish coating

Highest grade type with super durability given by fluorine resin

- The synergy effect of fluorine resin and light stabilization provides super durability and super weather resistance.
- Its high density film structure on the surface provides excellent dirt resistance.
- Being slightly elastic, it covers small hairline cracks on the substrate and prevents rainwater from penetrating into the substrate.
- It provides excellent resistance to microbe such as fungus and algae.
- It provides excellent adhesion to various types of substrates for both new and renovation projects.

Scan the code below to see more details.



BELL ART Si



Highly durable, dirt resistant, ceramic silicone resin based multi-design and decorative finish coating

Upgraded type with excellent durability and dirt resistance

- Adopting elastic ceramic silicone resin as a binder provides excellent durability and weather resistance.
- Its high density film structure on the surface provides excellent dirt resistance.
- Being slightly elastic, it covers small hairline cracks on the substrate and prevents rainwater from penetrating into the substrate.
- It provides excellent resistance to microbe such as fungus and algae.
- It provides excellent adhesion to various types of substrates for both new and renovation projects.

Scan the code below to see more details.



ELASTIC BELL ART



Elastic acrylic resin based multi-design and decorative finish coating

Waterproof type with excellent elasticity

- With its excellent elasticity, it greatly enhances waterproof property compared with other BELL ART series.
- Acrylic resin paint film provides high durability for a long period of time.
- It provides excellent resistance to microbe such as fungus and algae.
- It provides excellent adhesion to various types of substrates for both new and renovation projects.

Scan the code below to see more details.



BELL ART



Acrylic resin based multi-design and decorative finish coating

Standard type with multi-design and decorative finish

- Acrylic resin paint film provides high durability for a long period of time.
- Being slightly elastic, it covers small hairline cracks on the substrate and prevents rainwater from penetrating into the substrate.
- It provides excellent resistance to microbe such as fungus and algae.
- It provides excellent adhesion to various types of substrates for both new and renovation projects.

Scan the code below to see more details.



* **BELL ART IN** with soft texture and excellent performance is also available for interior. Refer to

Super dirt resistant specification (Optional)

SK CERAMI FINE TOP

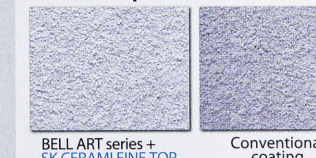
Super dirt resistant water-based clear topcoat



New proposal for preventing dirt and keeping the beautiful appearance for a long period of time by just applying topcoat.

With super hydrophilic nano ceramic particles, it keeps the natural texture of decorative coatings as well as long lasting clean appearance.

Dirt resistance test
Outdoor exposure for 6 months



Scan the code below to see more details.



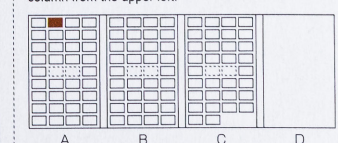
Quick reference matrix for colour numbers

Colour no.	Location	Colour no.	Location	Colour no.	Location	Colour no.	Location	Colour no.	Location	Colour no.	Location	Colour no.	Location	Colour no.	Location
White	A-1-1	1153	C-1-2	1326	A-4-5	1466	C-3-2	1621	A-1-6	1831	B-1-6	2015	B-1-4	2155	B-2-8
1002	A-2-1	1175	C-4-3	1330	B-1-5	1470	C-2-4	1632	A-3-9	1842	B-2-6	2026	A-1-5	2166	A-4-9
1024	B-1-1	1186	C-1-4	1341	B-4-4	1481	C-3-6	1643	C-1-8	1853	B-3-6	2030	A-2-6	2170	B-3-9
1035	A-2-2	1190	A-4-4	1352	A-3-8	1492	C-2-8	1654	A-2-7	1864	C-4-8	2041	B-3-7	2203	A-1-7
1046	A-4-1	1201	A-3-2	1363	B-2-9	1503	C-2-9	1680	A-2-8	1875	B-1-8	2052	B-4-5	2214	A-2-9
1061	B-2-1	1212	B-4-1	1385	B-3-8	1536	C-1-3	1702	C-4-4	1886	B-4-7	2063	B-4-2	2225	B-1-7
1083	C-2-1	1223	B-1-2	1396	C-2-2	1540	C-3-4	1735	C-4-5	1890	C-2-6	2074	C-2-3	2236	B-3-1
1094	A-1-3	1234	B-1-3	1400	C-1-1	1551	C-2-7	1746	C-4-6	1923	B-4-8	2085	B-4-6	3006	A-1-2
1116	A-4-2	1256	B-3-3	1411	C-3-1	1562	C-1-7	1761	C-3-8	1960	B-4-9	2100	C-1-6	3010	A-1-8
1120	A-1-4	1260	A-4-6	1422	C-4-1	1584	C-3-7	1783	C-4-7	1982	B-1-9	2122	B-4-3	3021	A-1-9
1131	C-4-2	1293	A-4-7	1433	B-3-2	1595	A-4-8	1794	B-2-4	1993	A-2-3	2133	A-3-7	3032	A-2-4
1142	A-3-4	1315	B-2-7	1455	C-3-3	1610	C-1-5	1805	B-2-3	2004	A-3-6	2144	C-1-9	3043	A-3-1

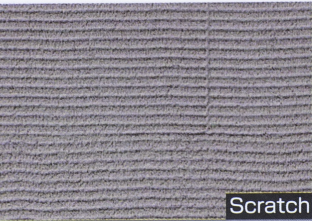
* In this table, the initial "AC" are omitted from colour numbers.
 * The location codes indicate "Section - Column - Row".

Example

For the location code "A-2-1", colour number "AC-1002" is located on Section A in the first row of the second column from the upper left.

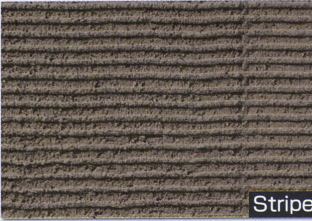


TROWEL FINISH



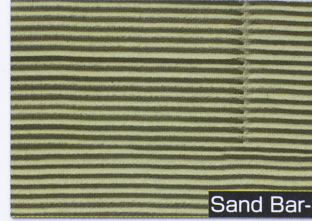
Scratch

● N-STONE
● SK Comb Spatula



Stripe

● SIPOSAND
● SK Comb Trowel



Sand Bar-S

● ---
● SK Wave Spatula-S



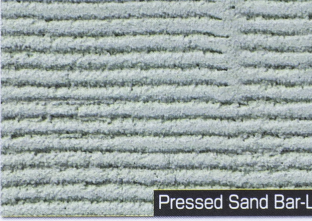
Sand Bar-L

● SIPOSAND
● SK Wave Spatula-L



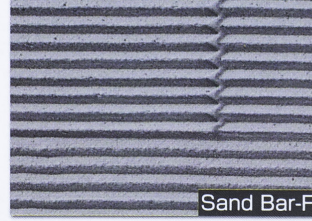
Feather

● Marble powder No.1,5
● Sharp Trowel



Pressed Sand Bar-L

● SIPOSAND
● SK Wave Spatula-L




Sand Bar-FL

● Marble powder No.1
● SK Wave Spatula-L




Sand Bar-AL

● N-STONE
● SK Wave Spatula-L



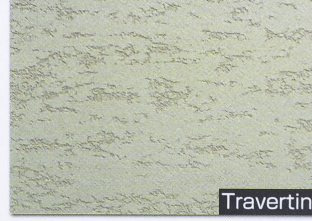
Tail-S

● Marble powder No.1,5
● SK Finishing Trowel



Tail-L


● Marble powder No.1,3,8
● SK Finishing Trowel



Travertine

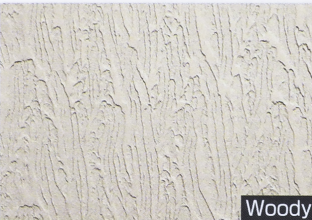
● SIPOSAND
● Sharp Trowel

ROLLER FINISH



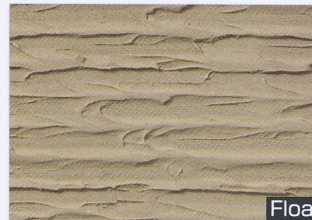
Flower

● ---
● Flower Roller




Woody

● ---
● Woody Roller



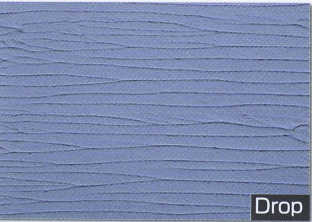
Float

● ---
● Float Roller




River

● ---
● River Roller



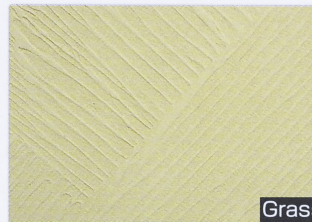
Drop

● ---
● Wool Roller (Medium nap)




Canyon

● SIPOSAND
● Canyon Roller



Grass

● ---
● Wool Roller (Medium nap)



Lime Tone

● SIPOSAND
● Wool Roller (Medium nap)

BRUSH FINISH



Hair Line

● ---
● SK Design Brush



Lipple

● ---
● SK Design Brush



Draw

● ---
● SK Design Brush

- Be careful that pattern pictures are not scaled regularly.
- Printed colours and patterns may be slightly different from the actual finish. Please check them with sample board or mock-up.
- The pattern can be largely different depending on the application method. Check the pattern by test application in advance. In case a sample board or mock-up is already prepared, put the first priority on the pattern of the sample board or mock-up.
- If applying the materials to a large wall surface, the finish may become uneven depending on the type of patterns. Consult the nearest sales office for details.
- BELL ART F, BELL ART Si, BELL ART and ELASTIC BELL ART have a slight odour due to the nature of materials. For the indoor application, be careful about the ventilation.
- For details of the application procedure, please refer to the standard application specifications.

Application Tools



Sharp Trowel



Square Trowel



Wooden Trowel



SK Comb Trowel



SK Finishing Trowel



SK Comb Spatula



SK Wave Spatula-S (180mm)



SK Wave Spatula-L (180mm)



SK Design Brush



K-1 Roller



Float Roller



River Roller



Woody Roller



Canyon Roller



Plastic Roller



Flower Roller



Wool Roller (Medium nap)



SK Almighty Gun



Lithin tip



Stucco tip



Tile tip

- * Make sure to use the specified application tools.
- * Be careful not to come in contact with solvent-based material such as thinner. Protrusions for patterning may become loose.

Packing style

Product name	Packing style
MIRAC SEALER ECO W (CLEAR/WHITE)	15 kg/can
BELL ART F	20 kg/can
BELL ART Si	20 kg/can
BELL ART	20 kg/can
ELASTIC BELL ART	20 kg/can
All types of aggregates	20 kg/bag

Hazards Information and Safety Precautions

Handle a product in accordance with SDS (Safety Data Sheet).
Be careful about the safety control when conducting application work.

Precautions after Application

This material contains volatile chemical substances. Pay attention to safety measures for people having chemical sensitivity or allergies when handing over a project immediately after the application.

Suitable substrates

Concrete, Cement mortar, PC members (excludes lightweight PC), ALC panels, extruded cement boards, GRC panels, Calcium silicate boards, metal panels, Sealant, old paint films (old film should be sound), etc.

- * The appropriate undercoat is required according to the type of substrates. Please contact the nearest sales office for details.
- * For the substrates with grooves such as PC members, ALC panels, GRC panels and Calcium silicate boards, avoid application on groove area as it may cause cracking. Be careful to choose the pattern because for some patterns the continuity of patterns may be broken at grooves. DO NOT apply materials to lightweight PC members.

Uses

Interior and exterior walls of houses, condominiums, hotels and shops, etc.

 HEAD OFFICE IN JAPAN
SK KAKEN CO., LTD.
5-25, 3-Chome, Nakahozumi, Ibaraki-City,
Osaka, 567-0034, Japan
Tel: (81) 72-621-7727 Fax: (81) 72-621-7728
Web: <http://www.sk-kaken.co.jp>

 SINGAPORE SKK (S) PTE. LTD.
14 Pandan Road, Singapore 609262
Tel: (65) 6274-0020 Fax: (65) 6278-0060
Web: <http://www.sk-k.com.sg>
Factory: SINGAPORE FACTORY

INDONESIA
PT. SKK KAKEN DISTRIBUSI
PT. SKK KAKEN KONSTRUKSI
Setiabudi Atrium Building, 5th floor, suite 506,
Jl. H. R. Rasuna Said Kav. 62, Jakarta, Indonesia 12920
Tel: (62)21-5210401(5210402) Fax: (62)21-5210403
Factory: PT. SKK KAKEN INDONESIA

MALAYSIA SK KAKEN (M) SDN. BHD.
Suite 13. 01, Level 13, Centrepoint South, The
Boulevard, Mid Valley City, Lingkaran Syed Putra,
59200 Kuala Lumpur, Malaysia
Tel: (60)3-2282-9800 Fax: (60)3-2282-9810
Web: <http://www.sk-k.com.my>
Branch Office: Johor Bahru, Kuantan, Penang
Factory: SKK CHEMICAL (M) SDN. BHD.

THAILAND
SK KAKEN (THAILAND) CO., LTD.
518/5 Maneya Center Building 6th Floor,
Pleonchit Rd., Lumpini, Pathumwan, Bangkok 10330
Tel: (66)2-652-0600(0585)(0858)
Fax: (66)2-652-0639
Web: <http://www.sk-k.co.th>

Branch Office: Chiang Mai
Factory: SKK CHEMICAL (THAILAND) CO., LTD.

HONG KONG SKK (H.K.) CO., LTD.
38/F, Lee & Man Commercial Center,
169 Electric Road, Fortress Hill, Hong Kong
Tel: (85) 2-2529-3968 Fax: (85) 2-2527-0299
Web: <http://www.sk-khk.com.hk>

CHINA
SIKOKU KAKEN (SHANGHAI) CO., LTD.
Units 3-7, 25F, Far East International Plaza A, No. 319
Xianxia Road, Changning District, Shanghai, China
Tel: (86) 21-6209-9169 Fax: (86) 21-6209-9189
Web: <http://www.sk-k.com.cn>

Branch Office: Beijing, Guanzhou, Shenyang, Dalian,
Wuhan, Chongqing, Kunming, Nanjing, Suzhou, Hangzhou,
Tianjin, Changchun, Xi'an, Hefei, Henan
Factory:
SHANGHAI FACTORY, LANGFANG FACTORY